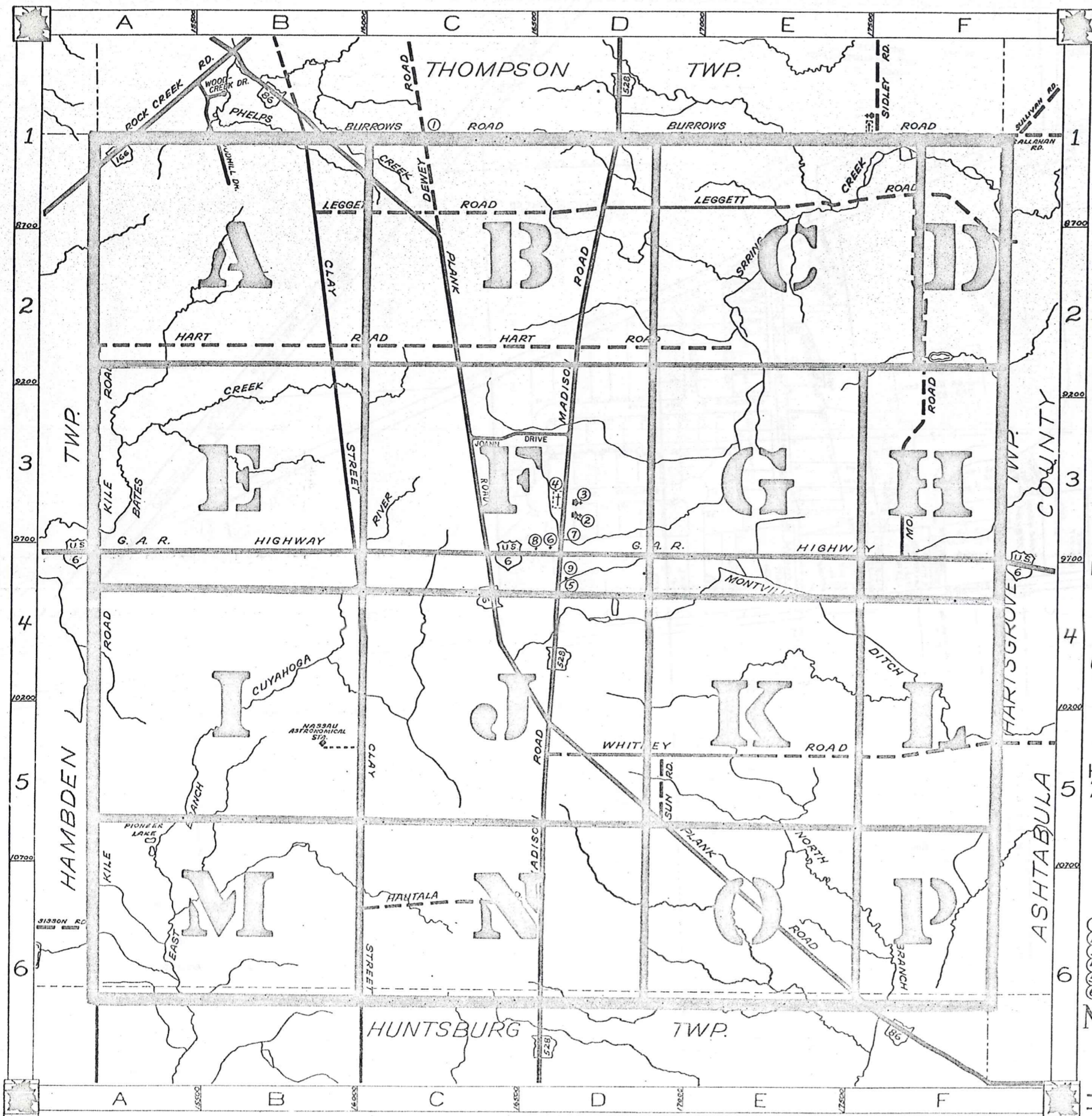


ROAD INDEX



A	I	R
J	JOANN DRIVE	C-3
B	BURROWS RD. BI-F1	KILE ROAD A2-A6
SUN ROAD	DS	
C	CLAY STREET BI-C6	LEGGETT RD. BI-F2
T		
D	DEWEY ROAD	MADISON RD. DI-D6
CI	MORGAN RD. FI-F3	MURPHY RD. FI
U		
E		V
F		WHITNEY RD. D5-F5
WOODHILL DR.	BI	
G	G.A.R. HIGHWAY A4-F4	X
P	PLANK ROAD BI-F6	
H	HART ROAD A2-E2	Y
HAUTALA ROAD	C6	
Q		Z

- ① LEDGEMONT SCHOOL
- ② COMMUNITY CHURCH
- ③ MONTVILLE METHODIST CHURCH
- ④ MONTVILLE CEMETERY
- ⑤ MONTVILLE VOL. FIRE DEPT.
- ⑥ UNITED STATES POST OFFICE
- ⑦ MONTVILLE TOWN HALL
- ⑧ STATE HIGHWAY GARAGE (SUB STATION)
- ⑨ MONTVILLE COMMUNITY CENTER

MONTVILLE TOWNSHIP

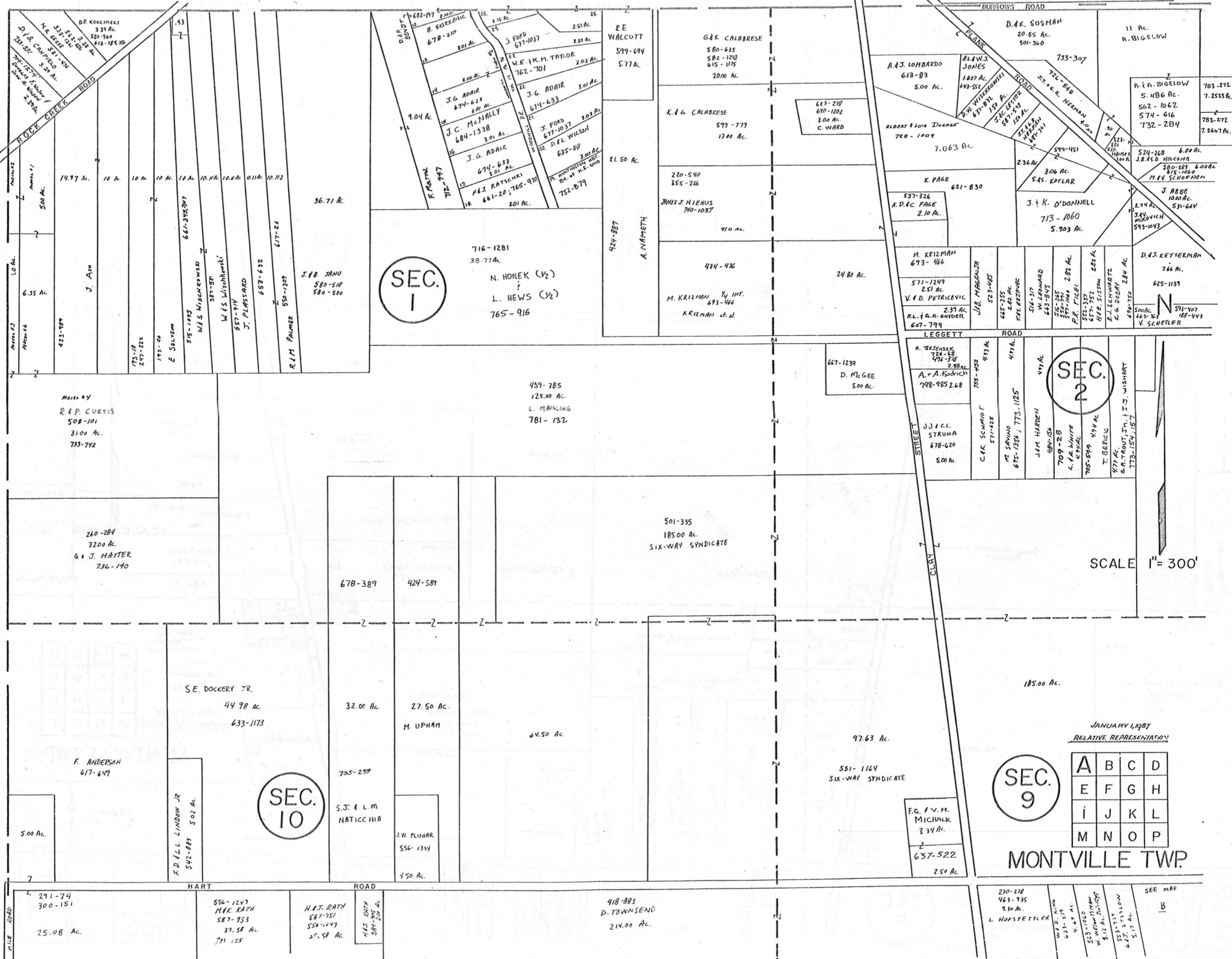
SCALE: 1" = 2000'
 ROBERT E. PHILLIPS,
 GEauga COUNTY ENGINEER

--- UNPAVED ROADS
 --- PAVED ROADS
 --- TOWNSHIP LINE
 --- COUNTY LINE



T H O M P S O N T O W N S H I P

H A M B D E N T O W N S H I P

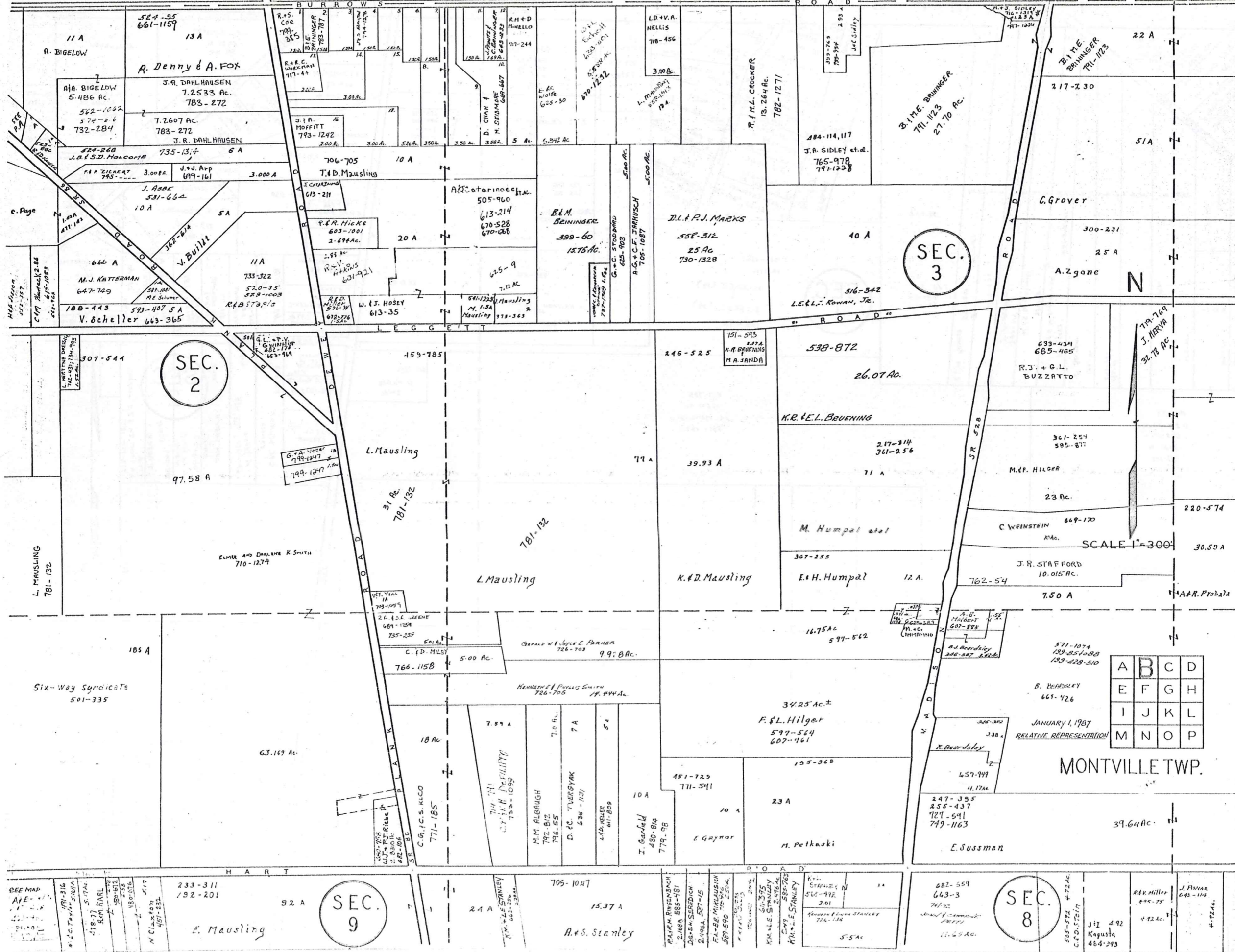


SEC. 9

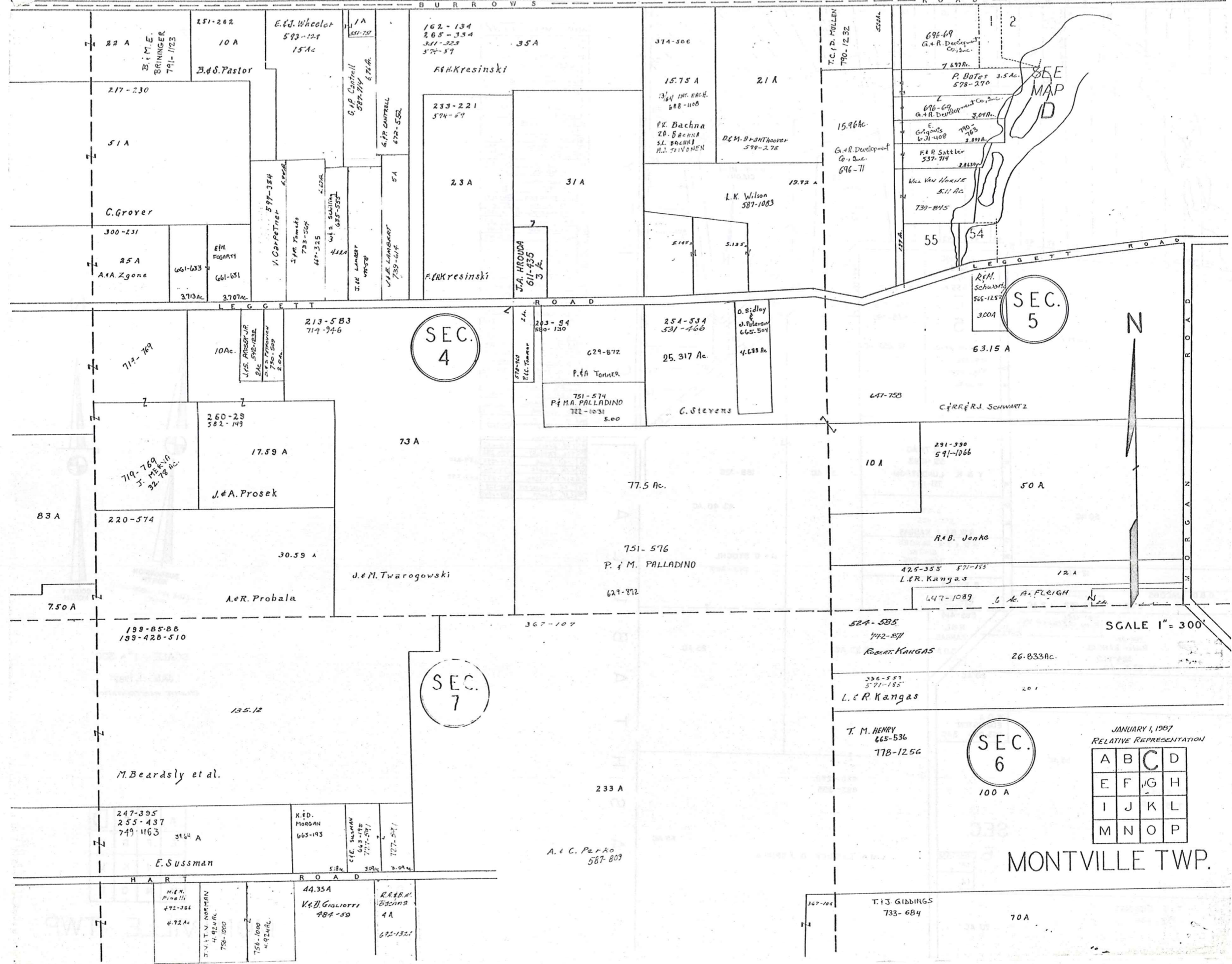
A	B	C	D
E	F	G	H
I	J	K	L
M	N	O	P

MONTVILLE TWP.

T H O M P S O N T W N S H I P



THOMPSON TOWNSHIP



SEC. 5

SEC. 4

SEC. 7

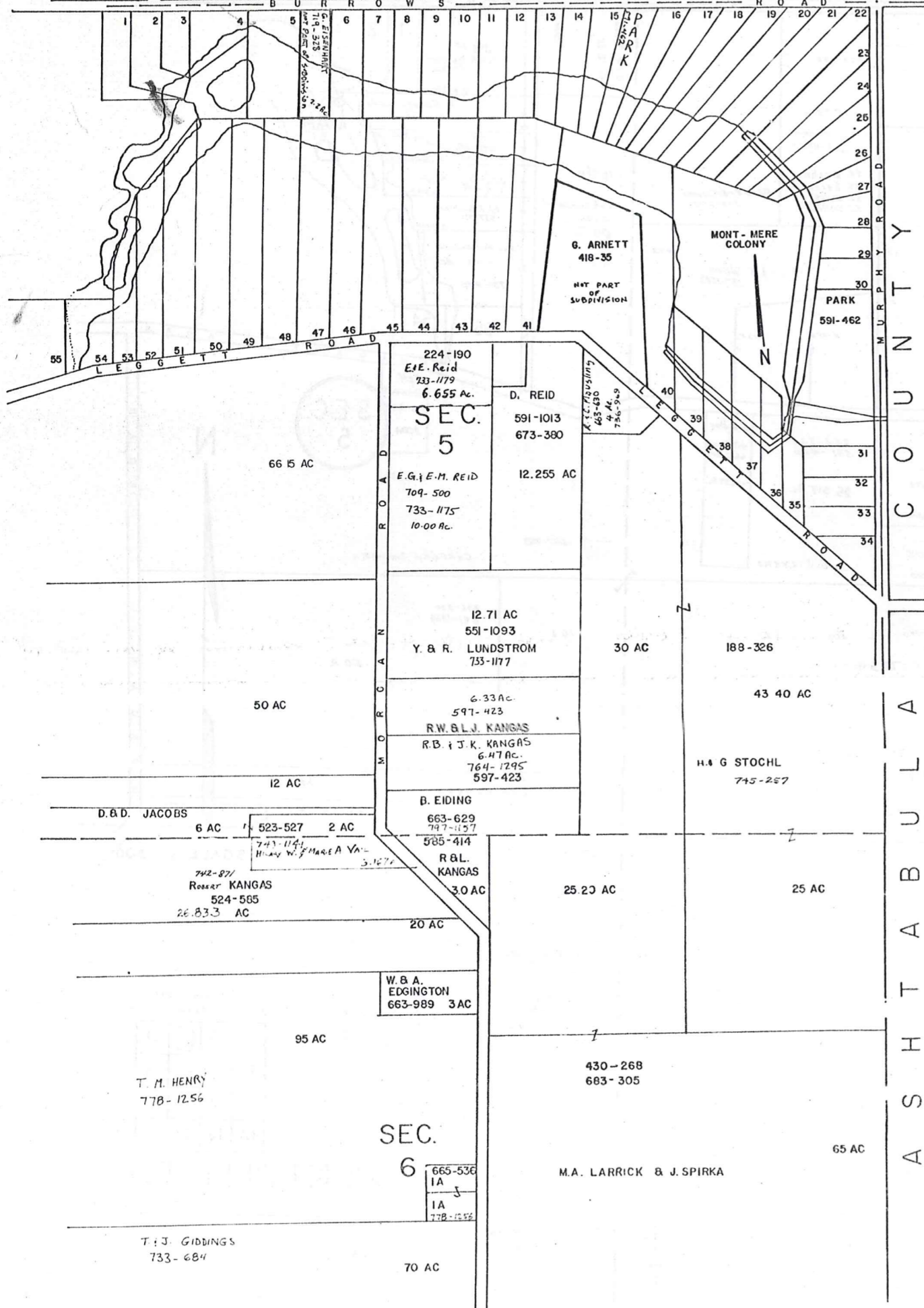
SEC. 6

JANUARY 1, 1997
RELATIVE REPRESENTATION

A	B	C	D
E	F	G	H
I	J	K	L
M	N	O	P

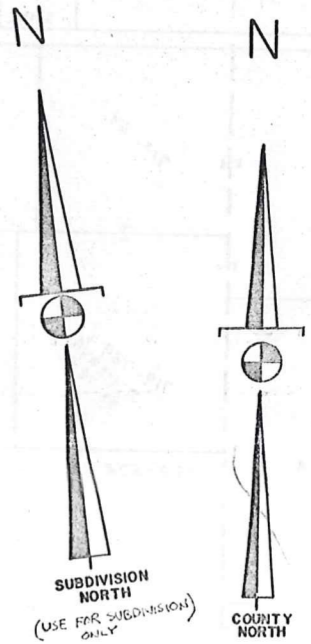
MONTVILLE TWP.

T H O M P S O N T O W N S H I P



MONT-MERE COLONY
SUBDIVISION ONE - Vol. 9-Pg 94

1	J.H. MURRAY	667-363
2	M.B. HUTTING	65-892
3	L.D. HORVATH	719-330
4	E.J. HANNA	700-175
5	J.F. MURPHY	762-156
6	J.F. MURPHY	762-156
7	J.F. MURPHY	762-156
8	J.F. MURPHY	762-156
9	J.F. MURPHY	762-156
10	J.F. MURPHY	762-156
11	J.F. MURPHY	762-156
12	J.F. MURPHY	762-156
13	J.F. MURPHY	762-156
14	J.F. MURPHY	762-156
15	J.F. MURPHY	762-156
16	J.F. MURPHY	762-156
17	J.F. MURPHY	762-156
18	J.F. MURPHY	762-156
19	J.F. MURPHY	762-156
20	J.F. MURPHY	762-156
21	J.F. MURPHY	762-156
22	J.F. MURPHY	762-156
23	J.F. MURPHY	762-156
24	J.F. MURPHY	762-156
25	J.F. MURPHY	762-156
26	J.F. MURPHY	762-156
27	J.F. MURPHY	762-156
28	J.F. MURPHY	762-156
29	J.F. MURPHY	762-156
30	J.F. MURPHY	762-156
31	J.F. MURPHY	762-156
32	J.F. MURPHY	762-156
33	J.F. MURPHY	762-156
34	J.F. MURPHY	762-156
35	J.F. MURPHY	762-156
36	J.F. MURPHY	762-156
37	J.F. MURPHY	762-156
38	J.F. MURPHY	762-156
39	J.F. MURPHY	762-156
40	J.F. MURPHY	762-156
41	J.F. MURPHY	762-156
42	J.F. MURPHY	762-156
43	J.F. MURPHY	762-156
44	J.F. MURPHY	762-156
45	J.F. MURPHY	762-156
46	J.F. MURPHY	762-156
47	J.F. MURPHY	762-156
48	J.F. MURPHY	762-156
49	J.F. MURPHY	762-156
50	J.F. MURPHY	762-156
51	J.F. MURPHY	762-156
52	J.F. MURPHY	762-156
53	J.F. MURPHY	762-156
54	J.F. MURPHY	762-156
55	J.F. MURPHY	762-156

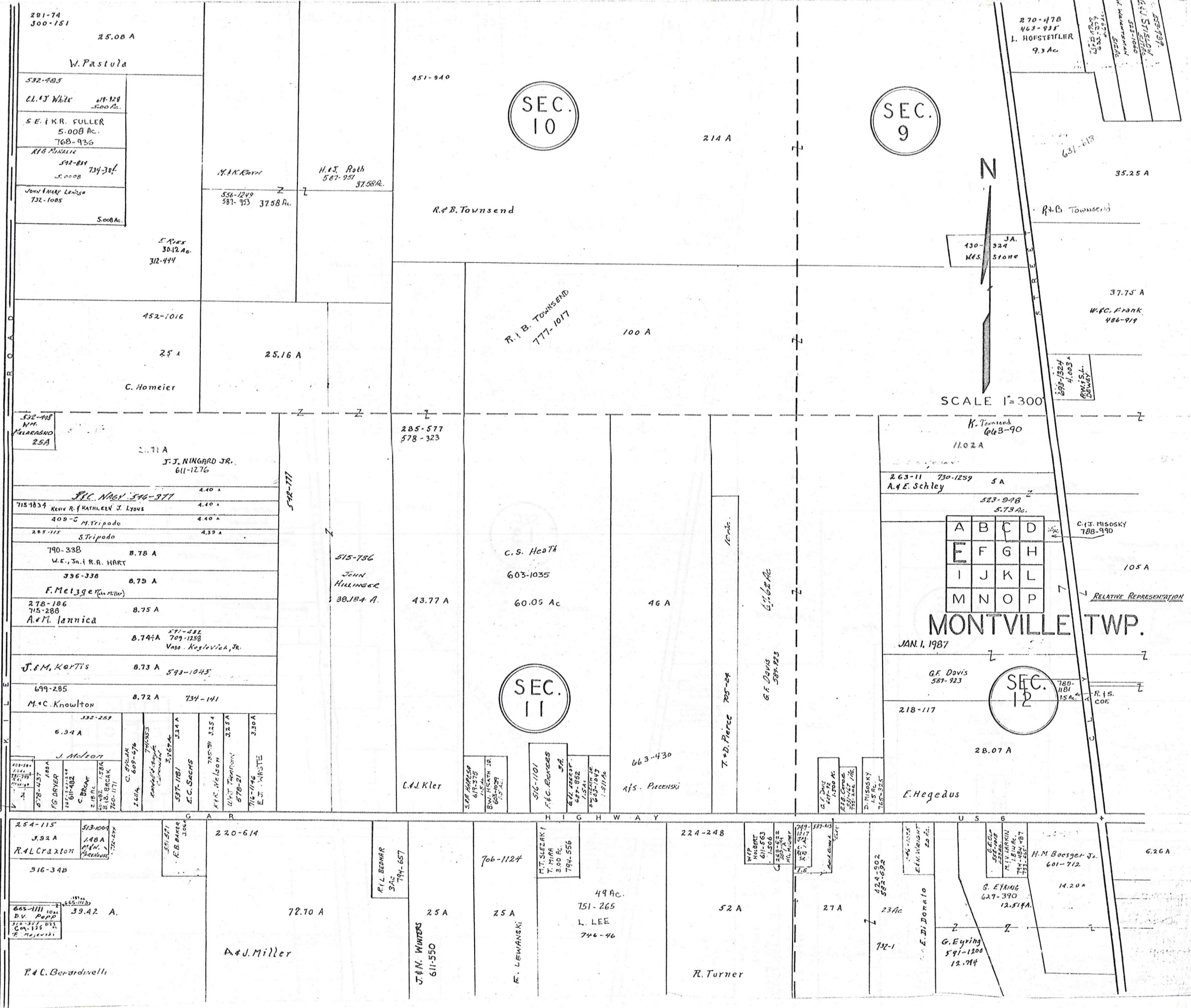


SCALE: 1" = 300'
JAN. 1, 1987
RELATIVE REPRESENTATION

A	B	C	D
E	F	G	H
I	J	K	L
M	N	O	P

MONTVILLE TWP.

H A M B D E N T O W N S H I P



MONTVILLE TWP.

JAN. 1, 1987

SEC. 12

SEC. 10

SEC. 9

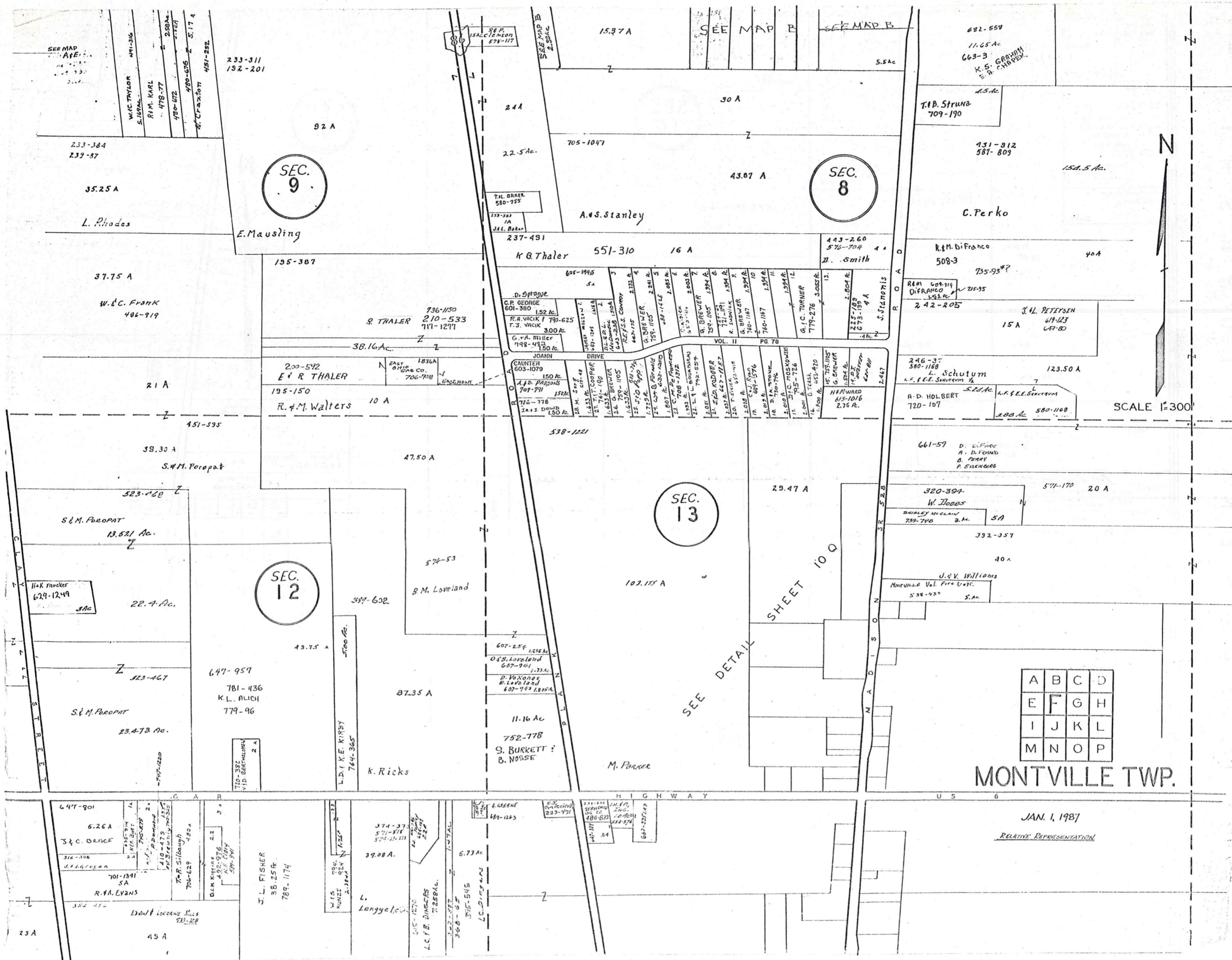
SEC. 11

SCALE 1"=300'



A	B	C	D
E	F	G	H
I	J	K	L
M	N	O	P

RELATIVE REPRESENTATION



SEC. 9

SEC. 8

SEC. 13

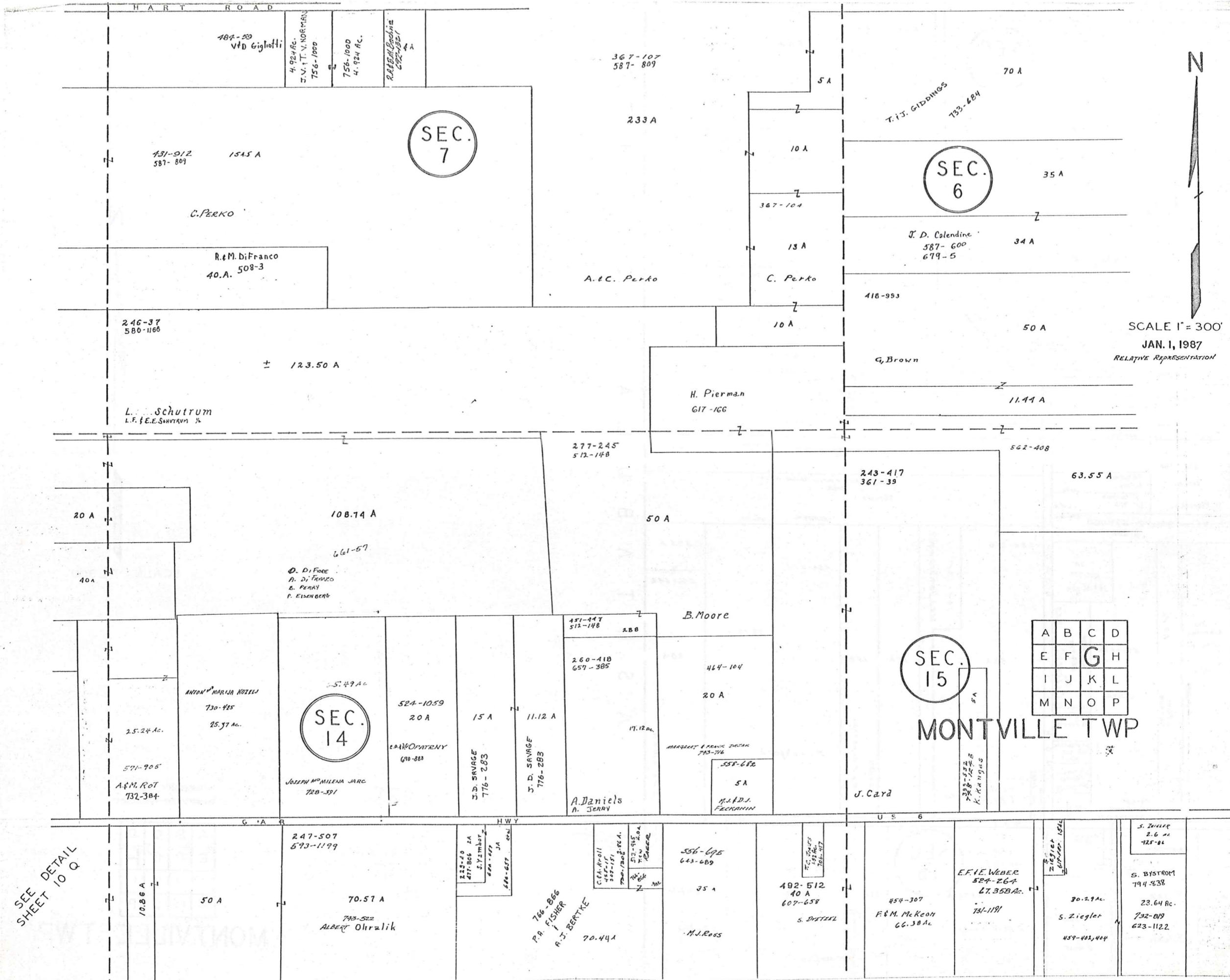
SEC. 12

A	B	C	D
E	F	G	H
I	J	K	L
M	N	O	P

MONTVILLE TWP.

JAN. 1, 1987

Relative Representation



SCALE 1" = 300'
 JAN. 1, 1987
 RELATIVE REPRESENTATION

A	B	C	D
E	F	G	H
I	J	K	L
M	N	O	P

SEC. 15

MONTVILLE TWP

SEC. 7

SEC. 6

SEC. 14

SEE DETAIL
 SHEET 10 Q

SEC. 6

SEC. 15

C O U N T Y
A S H T A B U L A

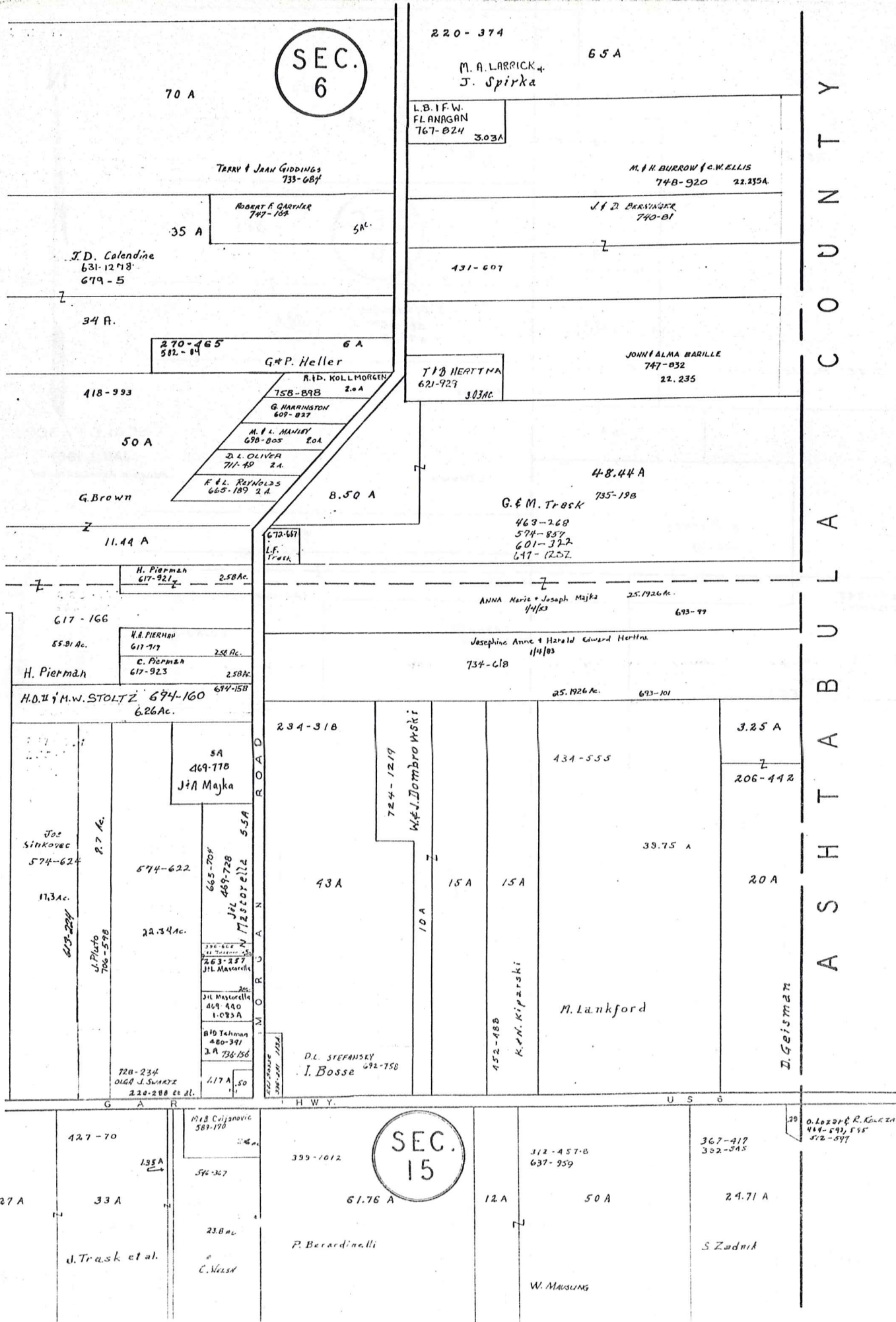


SCALE 1" = 300'

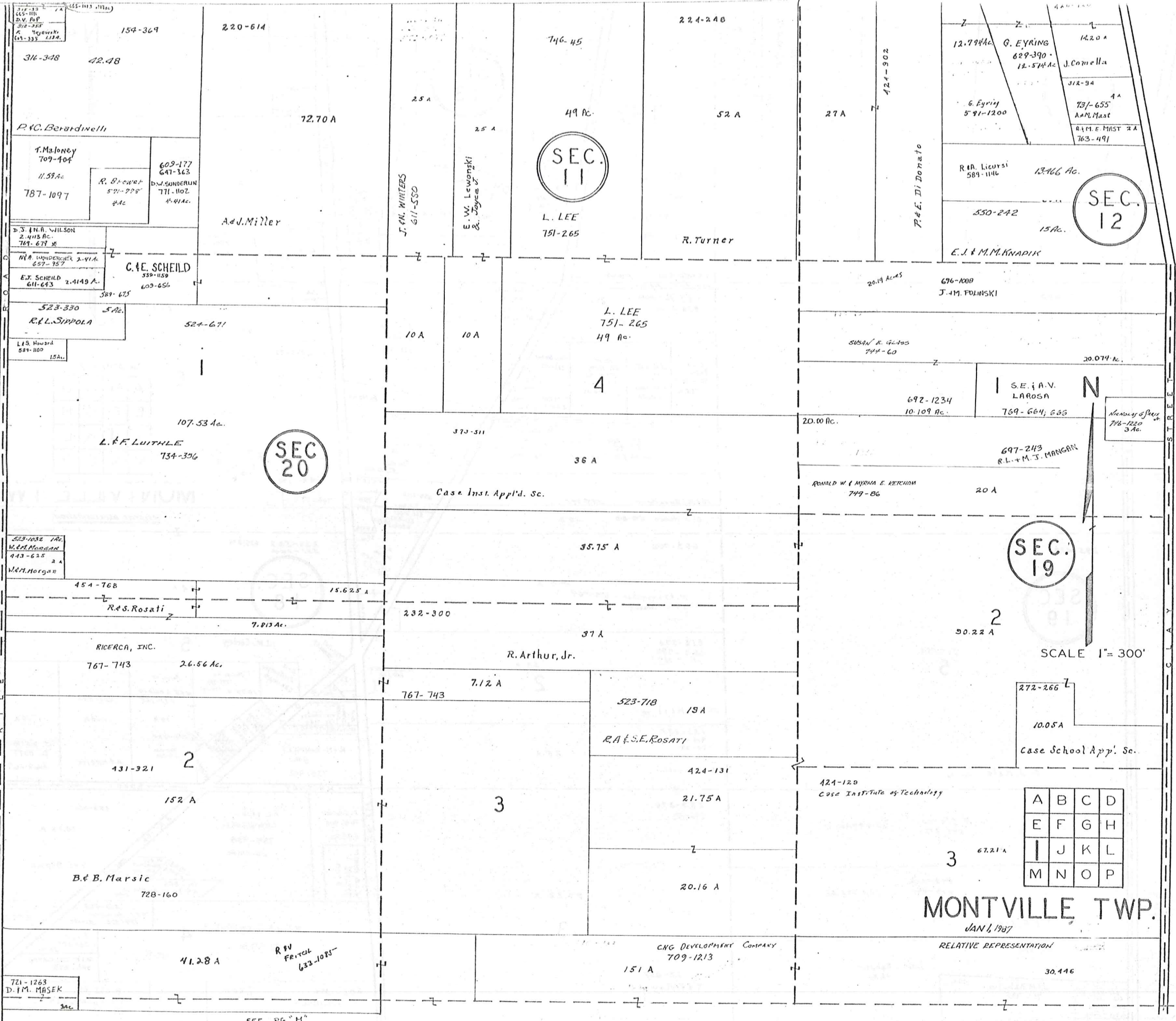
JANUARY 1, 1967
RELATIVE REPRESENTATION

A	B	C	D
E	F	G	H
I	J	K	L
M	N	O	P

MONTVILLE TWP



H A M B D E N T O W N S H I P



SEC. 11

SEC. 12

SEC. 20

SEC. 19

A	B	C	D
E	F	G	H
I	J	K	L
M	N	O	P

MONTVILLE TWP.

JAN 1, 1987

RELATIVE REPRESENTATION

SEC. 12

SEC. 13

SEC. 19



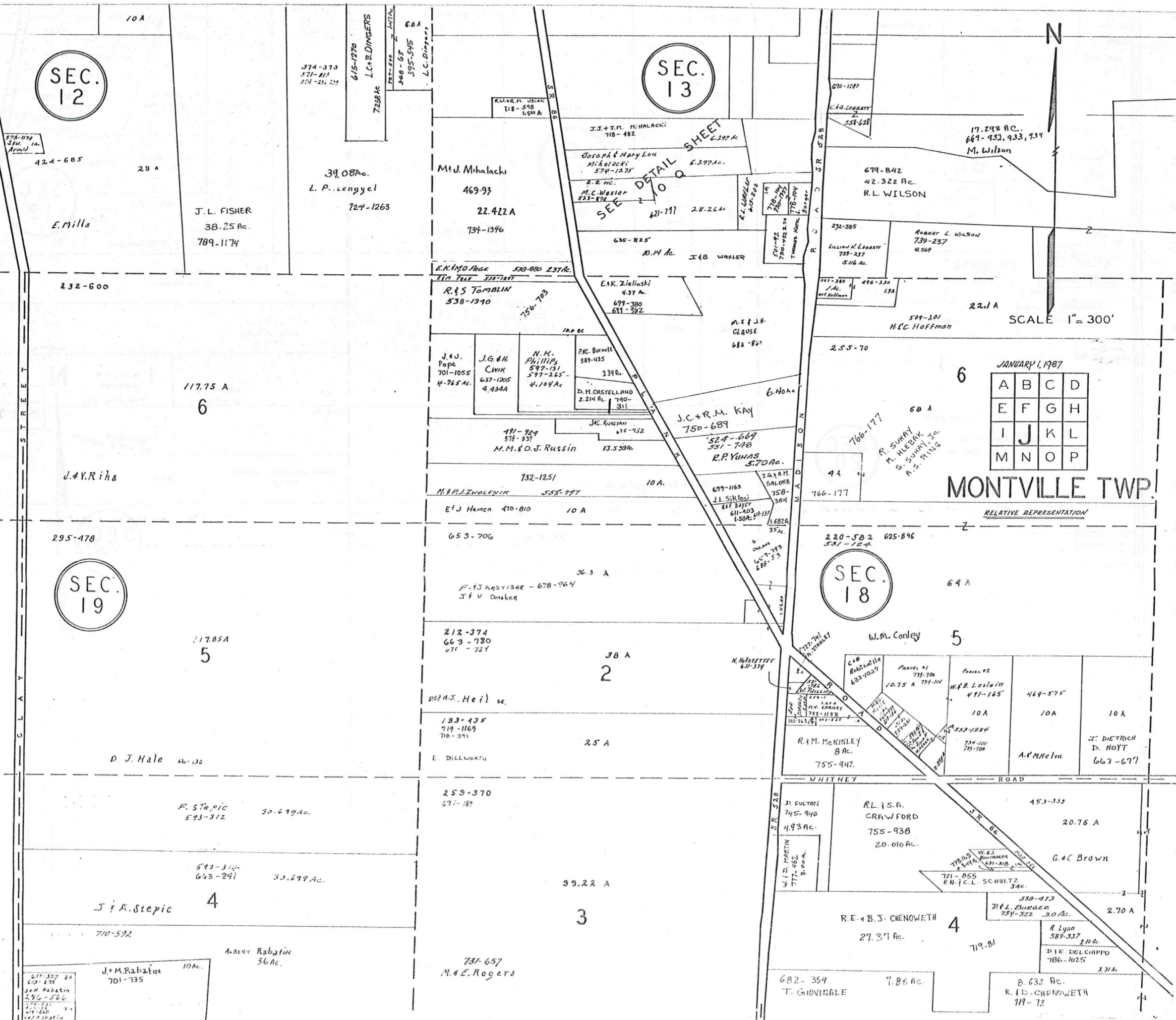
SCALE 1" = 300'

JANUARY 1, 1987

A	B	C	D
E	F	G	H
I	J	K	L
M	N	O	P

MONTVILLE TWP.

RELATIVE REPRESENTATION



271-307 24
63-235
J.M. Rabatin
296-566
710-592
J.M. Rabatin
701-735
10Ac.

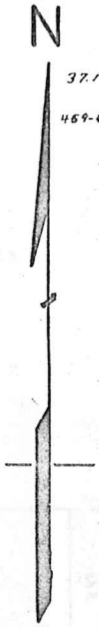
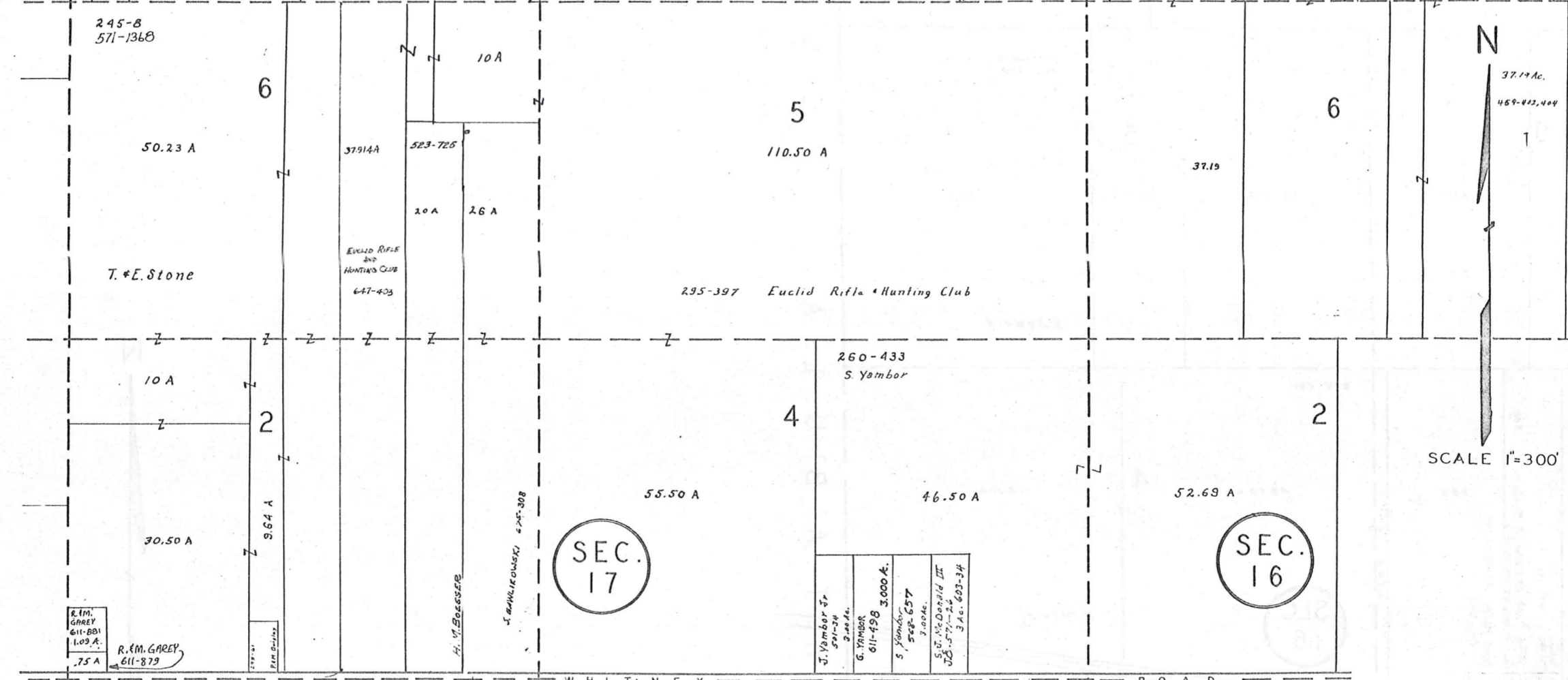
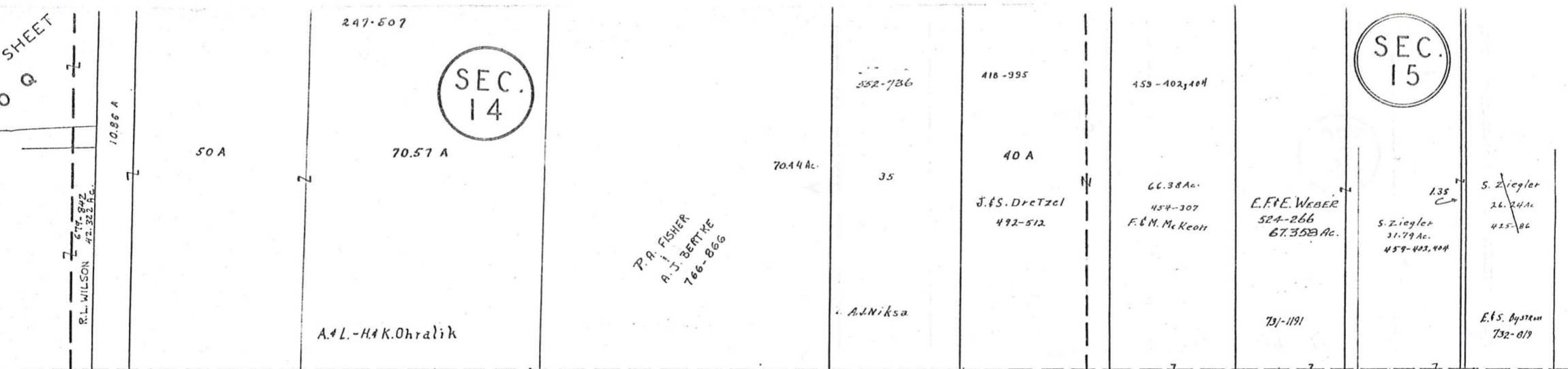
ALBERT Rabatin
36 Ac.

731-657
M.E. Rogers

682-354
T. GIOVINALE
7.86Ac.

8.632 Ac.
R. J. CHENOWETH
119-72

SEE
DETAIL SHEET
10 Q



SCALE 1"=300'

A	B	C	D
E	F	G	H
I	J	K	L
M	N	O	P

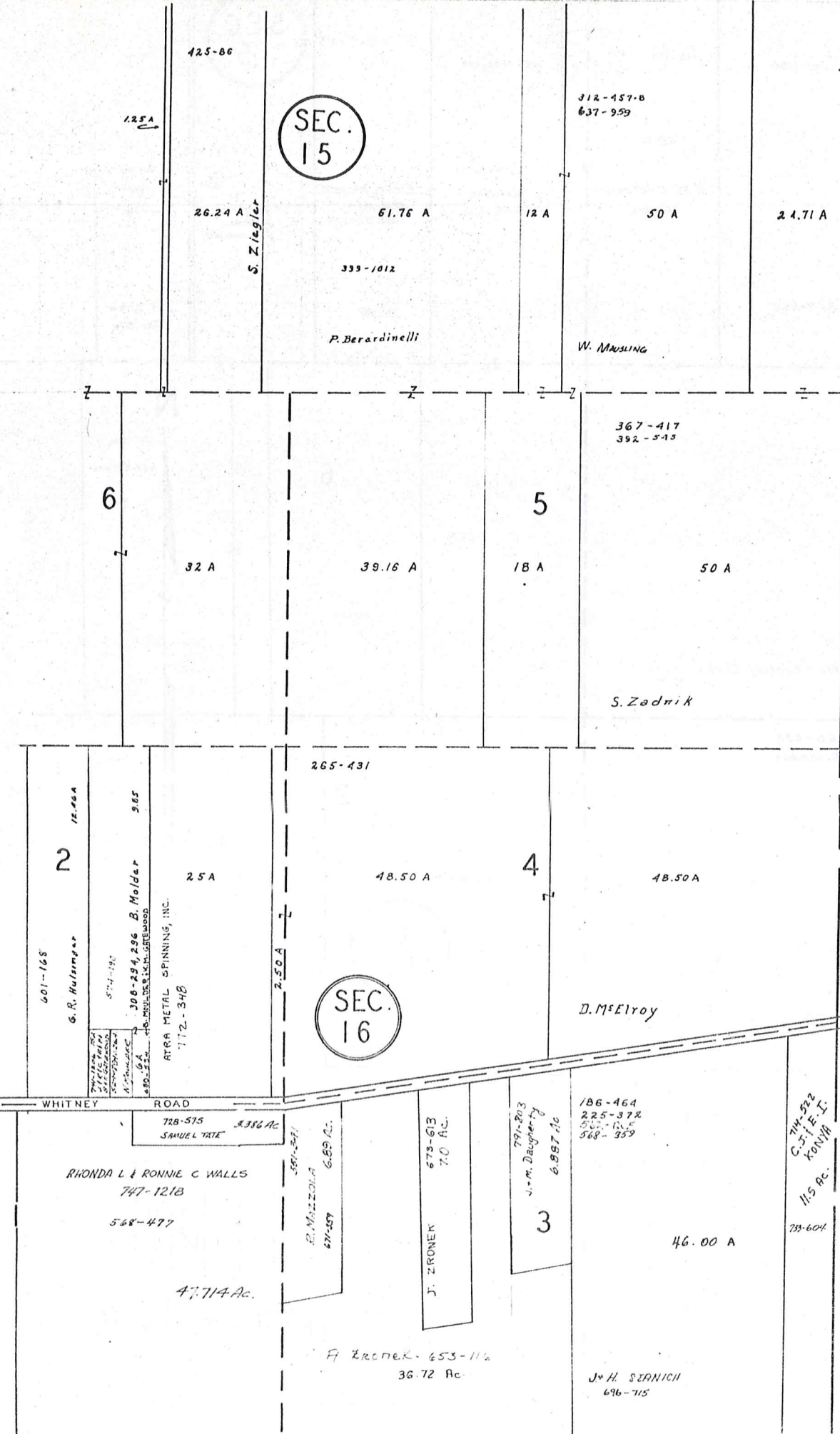
MONTVILLE TWP

JAN. 1, 1987
RELATIVE REPRESENTATION

SEC. 15

SEC. 16

C O U N T Y
A S H T A B U L A



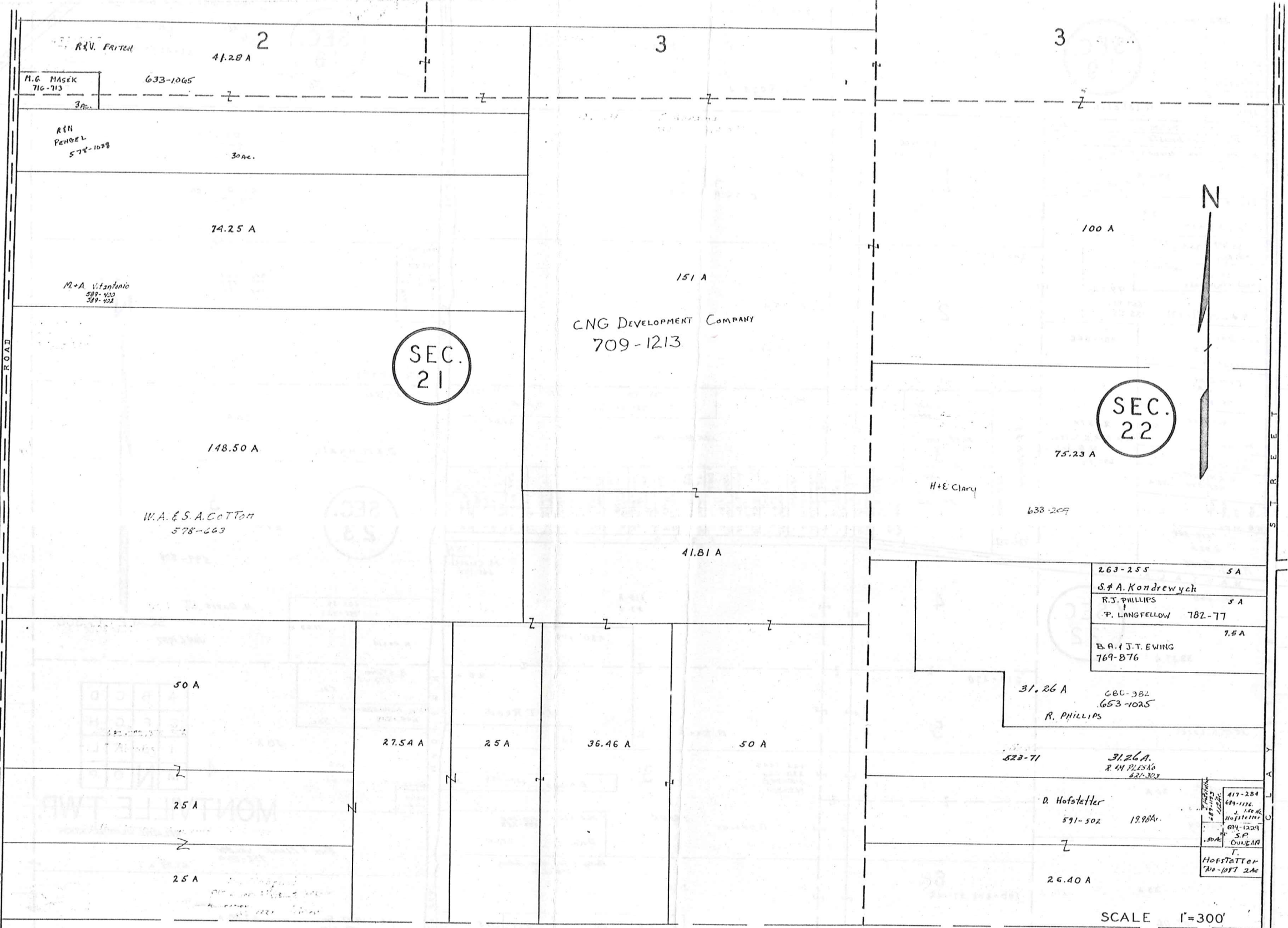
SCALE 1"=300'
JAN. 1, 1987

A	B	C	D
E	F	G	H
I	J	K	L
M	N	O	P

RELATIVE REPRESENTATION

MONTVILLE TWP.

H A M B D E N T O W N S H I P



SEC. 21

SEC. 22



SCALE 1"=300'

A	B	C	D
E	F	G	H
I	J	K	L
M	N	O	P

H U N T S B U R G T O W N S H I P

JAN. 1, 1987
RELATIVE REPRESENTATION

MONTVILLE TWP

286-194

SEC. 19

4 A

259-370

98.22 A

M. E. Rogers

452-981 SEE SHEET J

SEC. 18

36 AC

719-12

R.E. + D.L. CHENOWETH

617-307
618-307
J.M. Rabatin
254-331 2A
617-360
618-360
V.M. Rabatin

M. Rabatin

619-524 M. SAVAGE 2.34 A
R. D. AMBRUSTAR 607-113 2.34 A
531-246 CARL & BEVERLY MARSH 752-899 2.34 A

B.9B A
J. K. SCOTT BENA 747-581

268-418 9 A
H. M. Bodner

615-1142 3.515 61-47
D.M. Raby

3.615 AC
FRANK MAJEWSKI

R. J. Sillwell 669-51
235-55

254-491 5A
S. Grogan

D.M. CRISP 5A
591-66

460-659 5A
M. Norsic

443-358 2.25 A
R. M. Conley

G. H. WALTER 445-874 3.85 A

512-344 6.55 A
M. A. JAFFE

HAUTALA

551-668

SEC. 22

4

39.37 A

J. H. Kleppel

571-245 796-1269 20 A
P. Haney

25 A

707-112 796-1269
P. Haney

719-1200
C. (A.) ZAFFIRO
21.24 A

50 A
719-1200
C. J. + A. T. ZAFFIRO

245-206

9.215 AC

669-51 235-55

254-491 5A
S. Grogan

D.M. CRISP 5A
591-66

460-659 5A
M. Norsic

443-358 2.25 A
R. M. Conley

G. H. WALTER 445-874 3.85 A

512-344 6.55 A
M. A. JAFFE

HAUTALA

551-668

39.37 A

J. H. Kleppel

571-245 796-1269 20 A
P. Haney

25 A

707-112 796-1269
P. Haney

195-296-97-142

38.91 A

EDDIE R LIGHT 695-541 3.03 A
W. S. RHODES 618-140

67.40 A

W. E. LIGHT Sr. 678-669

719-1200
C. (A.) ZAFFIRO
21.24 A

50 A
719-1200
C. J. + A. T. ZAFFIRO

245-206

9.215 AC

669-51 235-55

254-491 5A
S. Grogan

D.M. CRISP 5A
591-66

460-659 5A
M. Norsic

443-358 2.25 A
R. M. Conley

G. H. WALTER 445-874 3.85 A

512-344 6.55 A
M. A. JAFFE

HAUTALA

551-668

39.37 A

J. H. Kleppel

571-245 796-1269 20 A
P. Haney

25 A

707-112 796-1269
P. Haney

195-296-97-142

38.91 A

EDDIE R LIGHT 695-541 3.03 A
W. S. RHODES 618-140

67.40 A

W. E. LIGHT Sr. 678-669

403-495
J. M. DIEDRICH
718-1308
25 A

R. C. DIEDRICH
718-1306
25 A

213-404
399-532
562-226

57.43 A

J. H. BRACE
251-532

30 A

D. M. Hyatt

763-901 734-63 721-1095
E. W. PLESCOTT, Jr. B. 00 AC

27.84 A

J. H. COLEMAN

719-1200
C. J. + A. T. ZAFFIRO

245-206

9.215 AC

669-51 235-55

254-491 5A
S. Grogan

D.M. CRISP 5A
591-66

460-659 5A
M. Norsic

443-358 2.25 A
R. M. Conley

G. H. WALTER 445-874 3.85 A

512-344 6.55 A
M. A. JAFFE

HAUTALA

551-668

39.37 A

J. H. Kleppel

571-245 796-1269 20 A
P. Haney

25 A

707-112 796-1269
P. Haney

195-296-97-142

38.91 A

EDDIE R LIGHT 695-541 3.03 A
W. S. RHODES 618-140

67.40 A

W. E. LIGHT Sr. 678-669

403-495
J. M. DIEDRICH
718-1308
25 A

R. C. DIEDRICH
718-1306
25 A

213-404
399-532
562-226

57.43 A

J. H. BRACE
251-532

30 A

D. M. Hyatt

763-901 734-63 721-1095
E. W. PLESCOTT, Jr. B. 00 AC

27.84 A

J. H. COLEMAN

719-1200
C. J. + A. T. ZAFFIRO

245-206

9.215 AC

669-51 235-55

254-491 5A
S. Grogan

D.M. CRISP 5A
591-66

460-659 5A
M. Norsic

443-358 2.25 A
R. M. Conley

G. H. WALTER 445-874 3.85 A

512-344 6.55 A
M. A. JAFFE

HAUTALA

551-668

39.37 A

J. H. Kleppel

571-245 796-1269 20 A
P. Haney

25 A

707-112 796-1269
P. Haney

195-296-97-142

38.91 A

EDDIE R LIGHT 695-541 3.03 A
W. S. RHODES 618-140

67.40 A

W. E. LIGHT Sr. 678-669



SCALE 1" = 300'

JAN 1, 1987

A	B	C	D
E	F	G	H
I	J	K	L
M	N	O	P

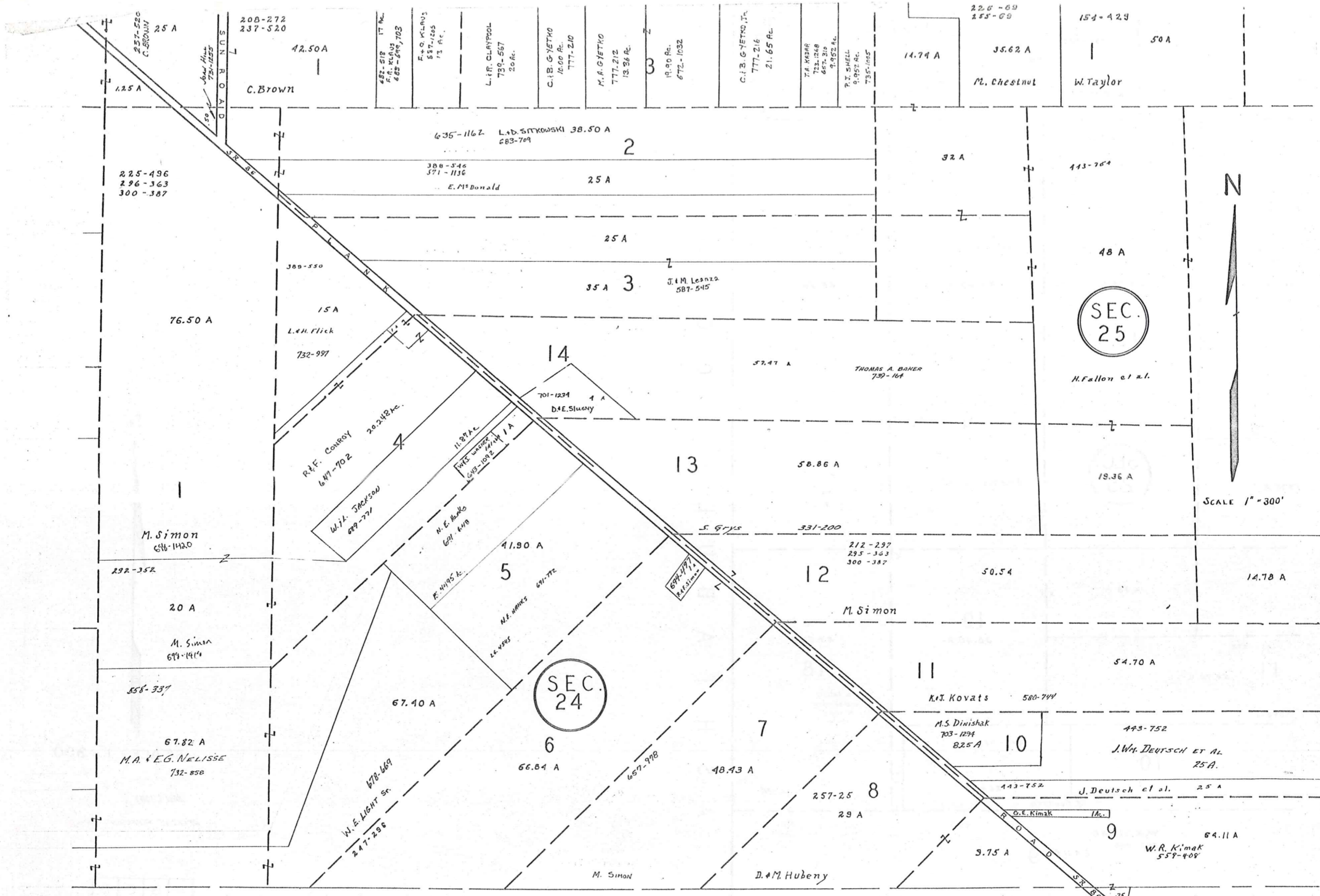
MONTVILLE TWP.

RELATIVE REPRESENTATION

Alex & ELANIE NIELSEN 752-858

67.82 A

H U N T S B U R G T O W N S H I P



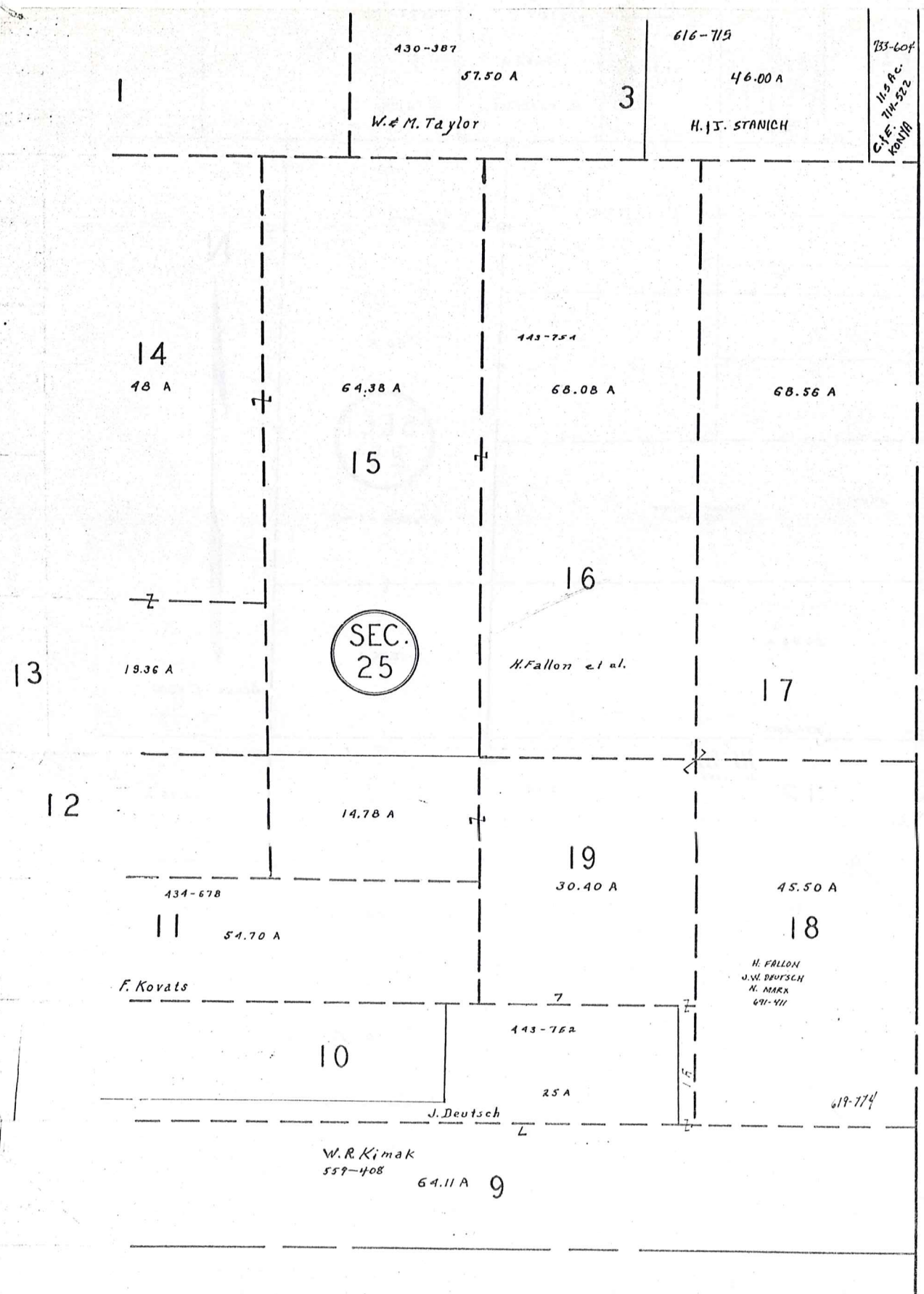
H U N T S B U R G T O W N S H I P

SCALE 1" = 300'
JAN 1, 1907

RELATIVE REPRESENTATION

A	B	C	D
E	F	G	H
I	J	K	L
M	N	O	P

MONTVILLE TWP.



A S H T A B U L A C O U N T Y

H U N T S B U R G T W P.



SCALE 1" = 300'

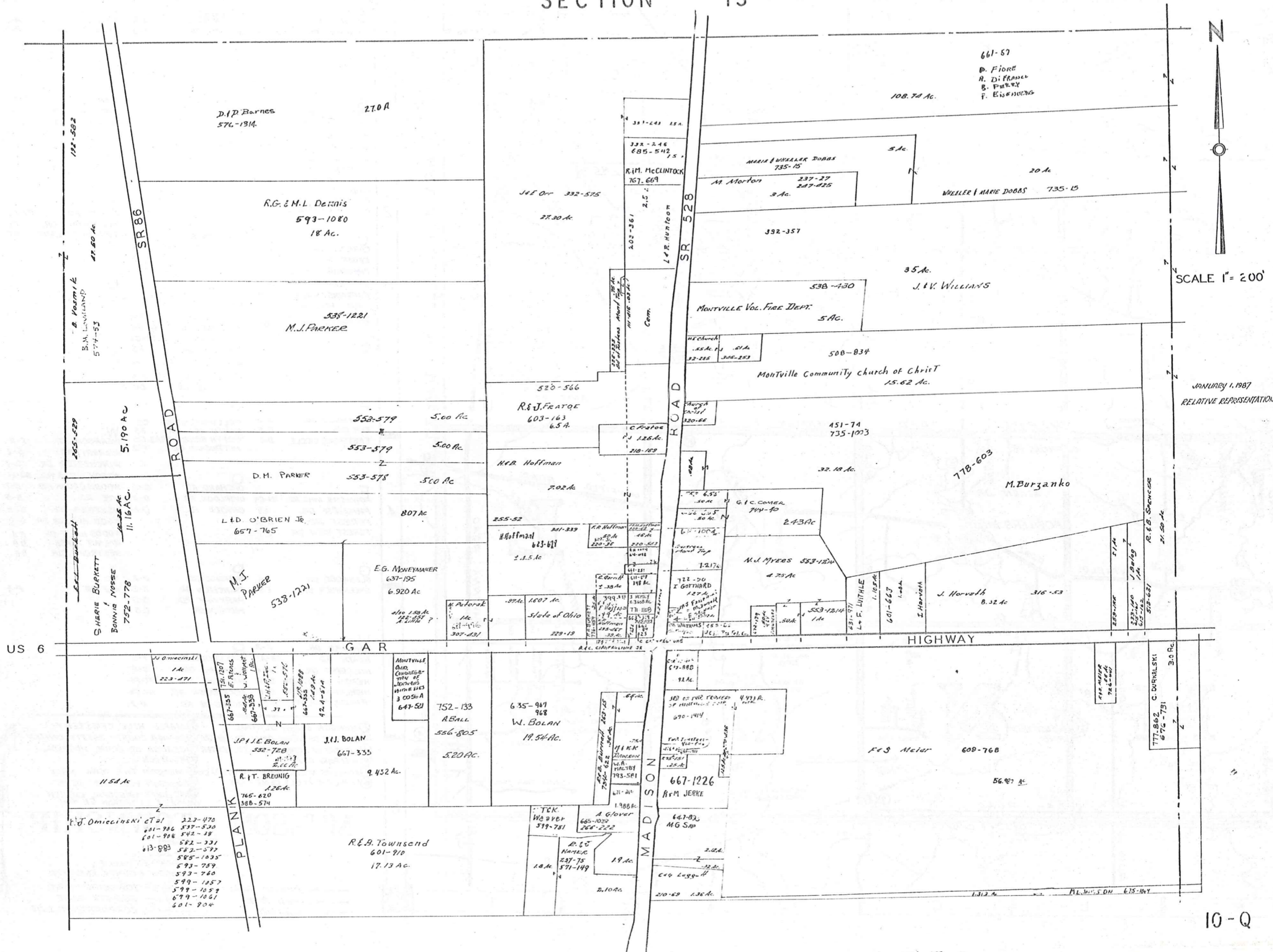
JAN 1, 1987

RELATIVE REPRESENTATION

A	B	C	D
E	F	G	H
I	J	K	L
M	N	O	P

MONTVILLE TWP.

MONTVILLE SECTION 13 TWP



10-Q

Explanation and Use Sheet for Geauga County, Ohio

SAMPLE (PARTIAL) COUNTY INDEX MAP



Township Boundary
 Township Name
 Village Boundary
 Village Name
 Tract Lot Number
 Street Name
 Acreage
 Deed Book & Page
 Owners Name
 Denotes Continous Ownership

SAMPLE (PARTIAL) MAP PAGE



Map Page Number
 Village Name
 Village Boundary
 Township Name

SAMPLE (PARTIAL) MUNICIPALITY INDEX MAP



Street Name
 Village Name
 Township Name

USE OF THE MAP VOLUME

1. LOCATE THE GENERAL AREA OF INTEREST ON THE COUNTY INDEX MAP, ATLAS PAGE 'B', AND NOTE THE MUNICIPALITY NAME (TOWNSHIP OR VILLAGE).
2. REFER TO THE TABLE OF CONTENTS, ATLAS PAGE 'C', AND NOTE THE BEGINNING ATLAS PAGE NUMBER FOR THE MUNICIPALITY OF INTEREST.
3. TURN TO THE PAGE INDICATED. ON THIS PAGE WILL APPEAR AN INDEX MAP FOR THAT MUNICIPALITY.
4. LOCATE THE GENERAL AREA OF INTEREST AND NOTE THE MAP PAGE NUMBER. THIS MAY BE EITHER A LETTER OR A NUMBER.
5. MAP PAGES ARE IN ALPHABETICAL (OR NUMERICAL) SEQUENCE FOLLOWING THE MUNICIPALITY INDEX MAP. FOLLOW SEQUENCE TO THE MAP PAGE INDICATED.
6. LOCATE SPECIFIC PARCEL OF INTEREST AND NOTE THE DESIRED INFORMATION.

NOTE: ON SOME MAPS YOU MAY BE REFERRED TO A DETAIL SHEET SHOWING AN ENLARGEMENT OF THE AREA. THESE MAPS ARE FOUND AT THE END OF THE REGULAR MAP PAGES IN EACH MUNICIPALITY IN EITHER ALPHABETICAL OR NUMERICAL SEQUENCE.

NOTE: CHARDON VILLAGE HAS TITLE SHEETS. TO LOCATE OWNERS NAME, NOTE THE PARCEL NUMBER, REFER TO THE TITLE PAGE FOLLOWING THE MAP OF INTEREST, FOLLOW NUMERICAL SEQUENCE TO THE PARCEL NUMBER OF INTEREST AND NOTE THE DESIRED INFORMATION. IN ALL OTHER MUNICIPALITIES THE OWNERS NAME APPEARS ON THE MAP PAGE.

This book is the property of REAL ESTATE DATA, INC. and is distributed by REDI under a leasing arrangement requiring return to REDI upon termination of the lease. REDI reserves the right to reclaim this book if found in the possession of any firm or person where possession was obtained through any unauthorized source.